








			CLUTCH KIT	COVER ASSEMBLY	DRIVEN PLATE	RELEASE BEARING
						
		ins/mm				

## LOTUS - continued

Esprit	75-80	215	--	HE4787	HB2618	--
Esprit 2.2 normally aspirated	80→	215	--	HE3518	HB3525	--
Esprit 2.2 Turbo →eng. 22727	80→	241	--	HE2501 <sup>1</sup>	HB8024●	--
eng. 22728→		240	--	HE4577	HB8024●	--

NOTE: <sup>1</sup>Can be replaced by HE4577 providing latest release bearing (A085Q4016J) is used.

Europa single cam	71-75	200	HK5662	HE1084	HB1139	HD1045
Europa twin cam	71-75	216	--	HE2848	HB2611	--
Exel (Toyota gearbox)	82→	215	--	HE3518	-- <sup>1</sup>	--

NOTE: <sup>1</sup>AP Racing driven plate

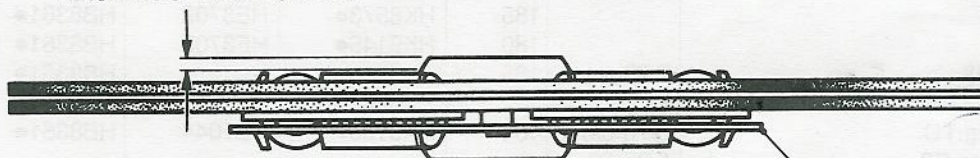
Lotus Cortina	65-67	216	--	HE2846	HB1340	--
Lotus Cortina	67-70	216	--	HE2842	--	--

### ▲<sup>1</sup> ECLAT, ELAN, ELITE—CLUTCH DRAG

Certain complaints of clutch drag on the above vehicles have been caused by the gearbox input shaft splines fouling the driven plate hub splines.

When a replacement driven plate is to be fitted to prevent any such occurrence mount the plate in a suitable lathe, by gripping the retainer plate, and machine 5 mm. (0.197") from the flywheel side of the hub.

MACHINE OFF 5 MM (0.197")



RETAINER PLATE

## MASERATI

Bi-Turbo 2000 cc.	81→	215	HK8295●	--	--	HD3948
2500 cc.	83→	240	HK8298●	HE4715	HB8021●	HD3948
Bora V8, 4.7, 4.9	71-81	267	--	HE2868	HB1648	HD3321★
Indy V8, 4.9	69-76	267	HK5595	HE2868	HB1647	HD3321★
Khasmin V8, 4.9	72-82	267	HK5595	HE2868	HB1647	HD3321★
Kyalami V8, 4.2	76-83	267	HK5595	HE2868	HB1647	HD3321★
Merak SS, V6, 3.0 eng. 520298→	→78	267	--	HE2868	HB1648	HD3321★
Mexico/Ghibli V8, 4.7, 4.9	69-74	267	HK5595	HE2868	HB1647	HD3321★